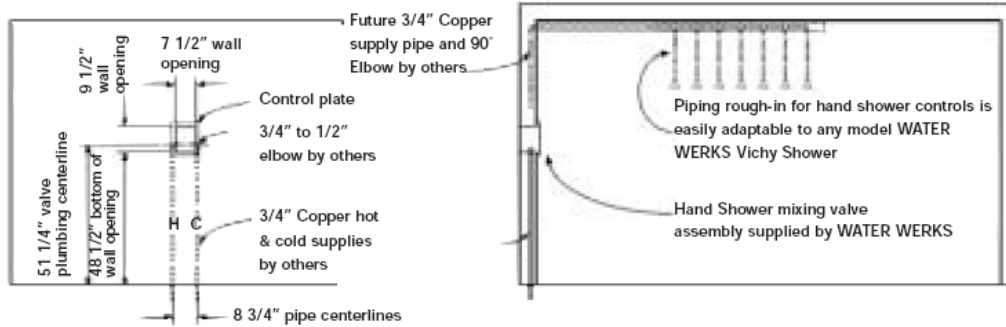


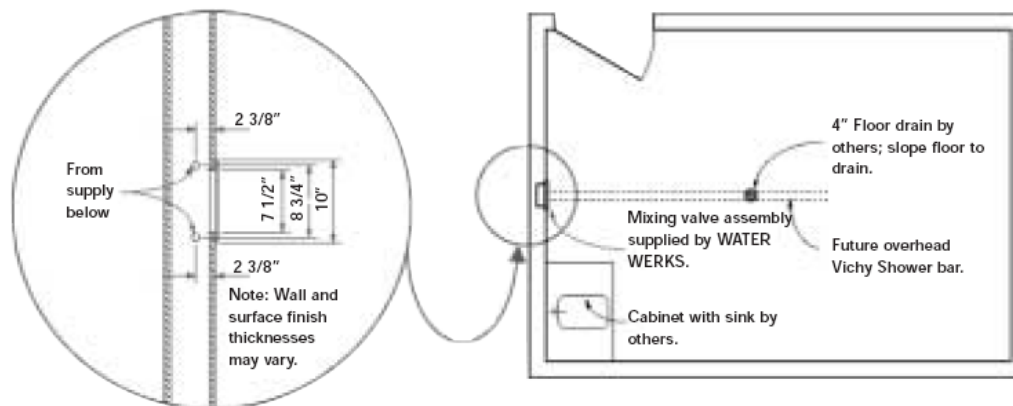


SPLASH HAND HELD SHOWER SYSTEM



Mixing Valve Piping
Rough-In Elevation

Typical Cross Section
of Shower System



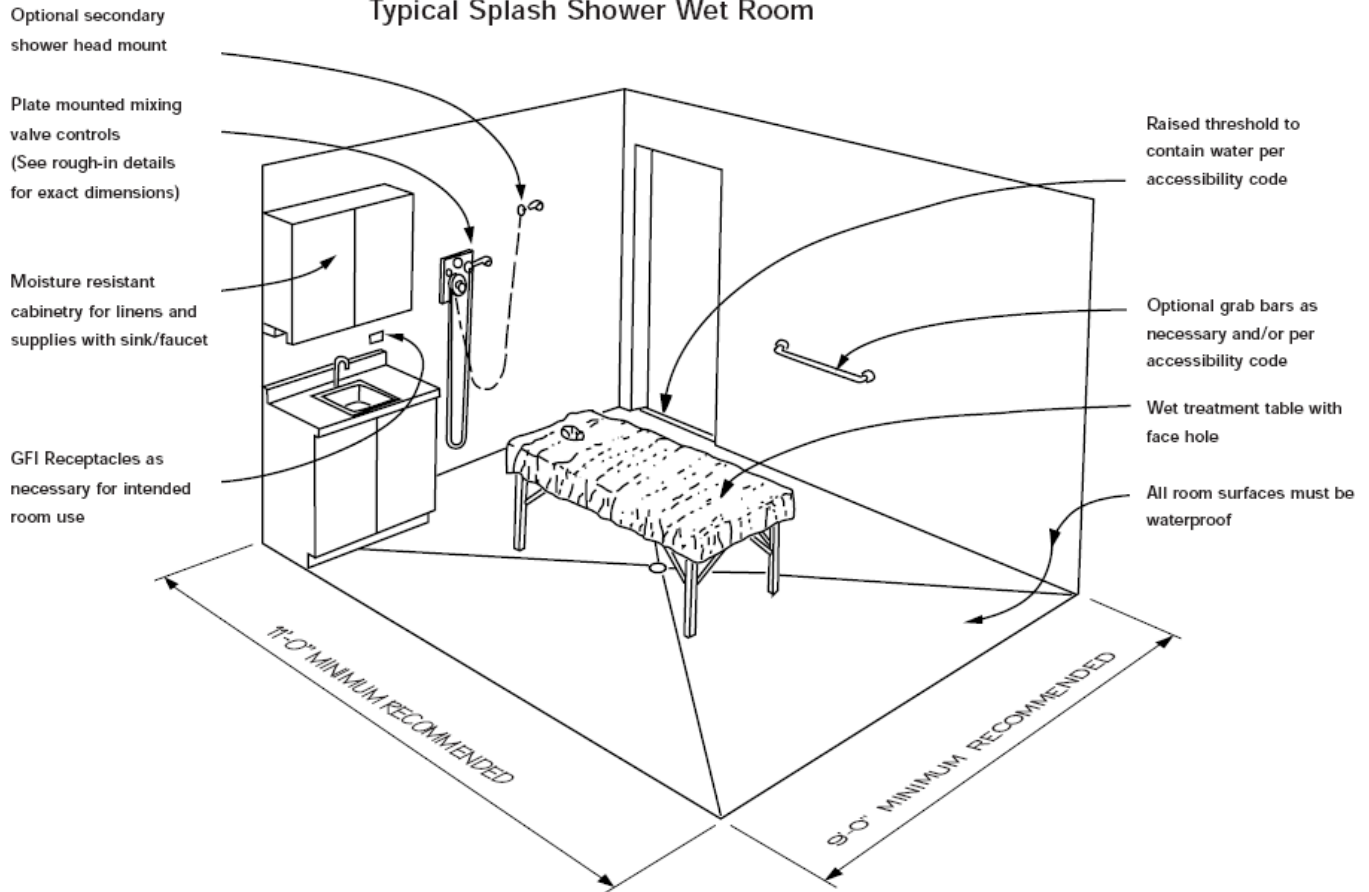
Plan Detail of Mixing
Valve Piping Rough-In

Typical Hand
Shower Room Plan

1. 3/4" supplies are required for future upgrade to WATER WERKS Vichy Shower. If no upgrade intended, then 1/2" supplies are recommended.
2. Mixing valve assembly is designed to receive water supplies from sides; pipe supply spacing shown originating from below at 8 3/4" is for convenience of future conversion to WATER WERKS Vichy Shower (overhead) which requires pipe supply from bottom. If current circumstances require piping supply from above, then loop around to enter wall opening from bottom.
3. Vent all plumbing as required by local code.
4. Grab bars are available from WATER WERKS.
5. For easiest installation, reserve rough-in plumbing until mixing valve assembly is on site.
6. WATER WERKS reserves the right to alter details or dimensions without notice. Contact WATER WERKS for most recent version of drawings.



Typical Splash Shower Wet Room



WaterWerks Limited 5 Year Warranty Statement

WaterWerks products are warranted to be free of defects in material and workmanship to the original domestic purchaser for five (5) years from the date of purchase as shown on the original invoice. If a defect is found, please contact WaterWerks at the phone number or email below for instructions. Defective parts or components that are covered under this warranty must be returned to WaterWerks insured and shipped pre-paid to the address shown below. WaterWerks will, at its option, repair or replace the defective part or component. This warranty does not cover labor charges, damage caused by improper installation or improper maintenance lack of reasonable maintenance as described in the product information or modifications. This warranty applies only to items that WaterWerks manufactures.

To obtain warranty service, contact WaterWerks either through your distributor, or by calling WaterWerks Customer Service Department at 952-884-9225 or by email at info@vichyshower.com. You may also write to us at WaterWerks Customer Service Department, 14323 State Road 70, Grantsburg, WI 54840. Please provide all pertinent information regarding your claim such as model, purchase date, serial number, and type of problem or defect.

There are no other express warranties on this product and ALL WARRANTIES OF MERCHANTABILITY AND WARRANTIES AS TO FITNESS FOR A PARTICULAR PURPOSE AND ANY OTHER IMPLIED WARRANTIES ARE EXPRESSLY DENIED. This warranty gives you specific legal rights, and you may also have other rights which vary from state to state.

The following specific items or components of WaterWerks equipment come with their own manufacturers warranties that vary depending on the item:

This includes the mixing valve in the WaterWerks Torrent, Typhoon, Monsoon, Cascade, Vavoom, and Splash Showers. The tub components in the WaterWerks tub products.